

**Model: LXDG-13A-20A**

## Single Jet Water Meter

### Feature:

- Single jet, Dry-dial
- Material body: Nylon plastic
- Size: DN15-DN20mm, (1/2"-3/4")
- Available for cold water (50°C)
- Accuracy: Class B / R80 / R100



### Main Technical Data:

According to ISO4064 (GB/T778.1-1996) Standard

Size		Class	Qs	Qp	Qt	Qmin	Min reading	Max reading
DN(mm)	Inch		Overload flow	Nominal flow	Transitional flow	Min flow		
			m³/h		L/h		m³	
15	1/2"	B	3	1.5	120	30	0.0001	99999
20	3/4"	B	5	2.5	200	50	0.0001	99999

According to ISO4064 (GB/T778.1-2007) Standard

DN SIZE	Mm Inch	15 1/2"	20 3/4"
Q4(m³/h)		3.125	5
Q3(m³/h)		2.5	4
R80	Q2(L/h)	50	80
	Q1(L/h)	31.25	50
R100	Q2(L/h)	40	64
	Q1(L/h)	25	40
Min reading(m³)		0.0001	0.0001
Max reading(m³)		99999	99999
Max pressure(MAP)		16	16
Max loss(Δ P)		63	63
Max temperature		T50	T50

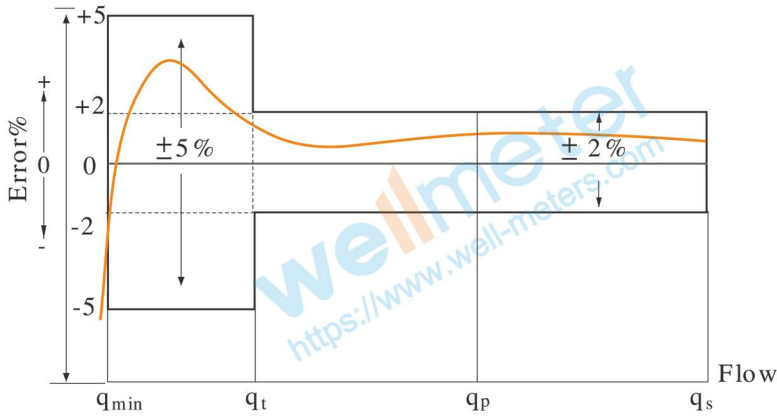
### INDICATING ERROR

At low zone is  $\pm 5\%$  from minimum flow rate ( $q_{min}$ ) to transitional flow rate ( $q_t$ ) exclusive boundary

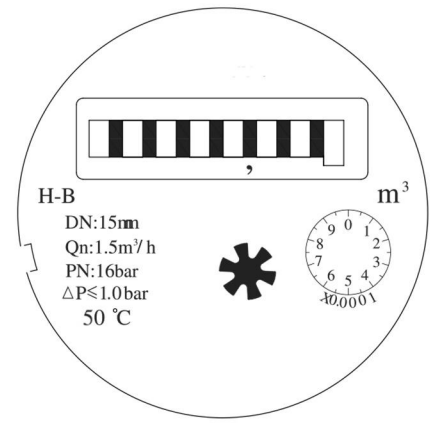
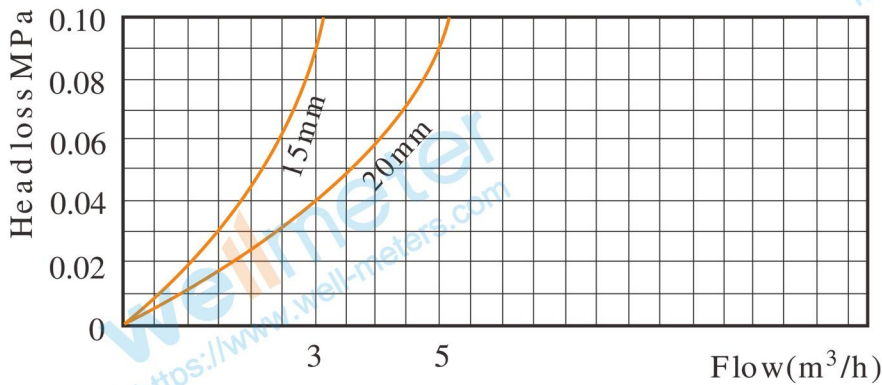
At high zone is  $\pm 2\%$  from transitional flow rate ( $q_t$ ) to overload flow rate ( $q_s$ )

Model: LXDG-13A-20A

### Error Curve:

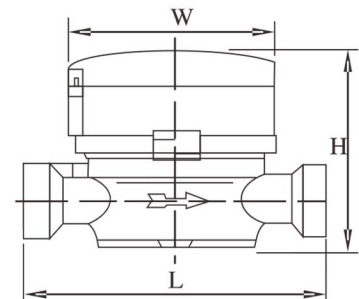


### Head Loss Curve:



### Dimensions and Weight:

Meter size Dia DN (mm)	L Length	W Width	H Height	Connecting Thread D	Weight Kg
15	110	77	80	G 3/4B	0.35
20	130	77	80	G 1"B	0.45



### WORKING CONDITION:

Water temperature: ≤50°C for cold water meter

Working pressure: ≤1.6Mpa

**wellmeter**

Ningbo Well Energy Technology Co.,Ltd

<https://www.well-meters.com>

[sales@well-meters.com](mailto:sales@well-meters.com)

+86-574-63702808